

Admiralty Avenue

London • • E16 2SJ
Per Month: £1,875 Per Month



coopers
est 1986

Admiralty Avenue

London • • E16 2SJ

Modern one bedroom, furnished apartment in the prestigious Royal Wharf development adjacent to Pontoon Dock DLR and the River Thames.

Finished to a high-spec, this spacious property comprises open plan kitchen/reception room, luxury bathroom, large double bedroom with built-in storage and private balcony space.

Royal Wharf enjoys prominent riverside position next to the Thames Barrier Park and offers quick access to Canary Wharf, Stratford and The City via the DLR.

Available July

Double Bedroom

Key phone entry

24hr Concierge

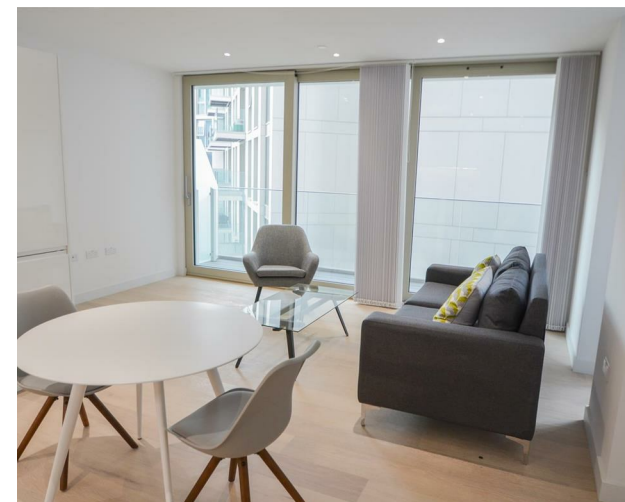
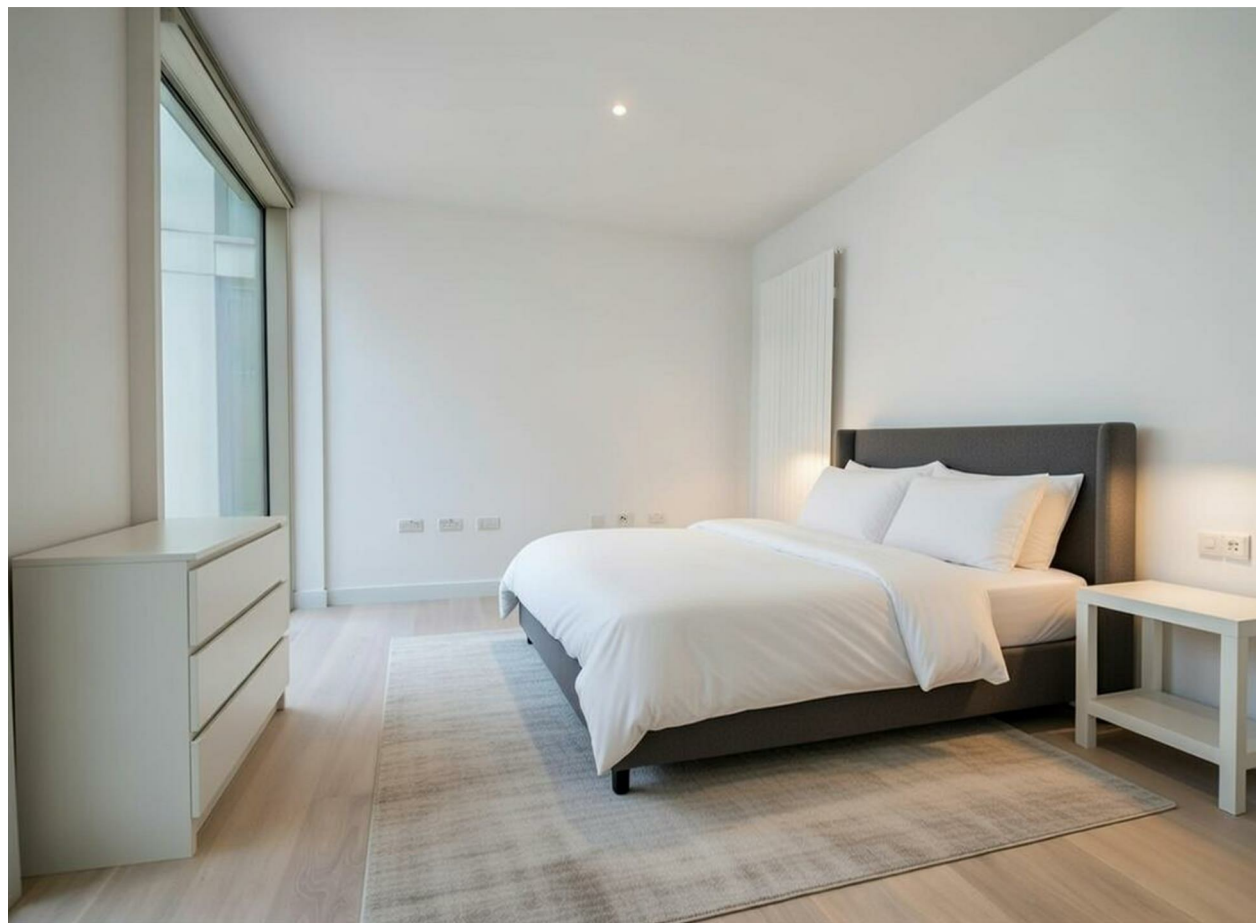
On-Site Supermarket

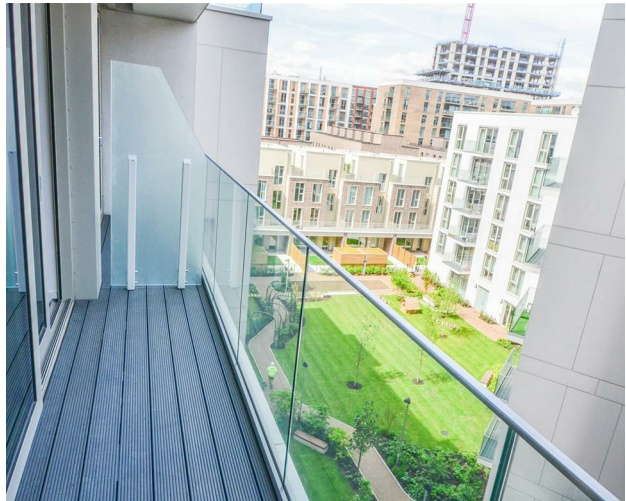
Furnished

Floor to ceiling windows

Private Balcony

These particulars are intended as a guide and must not be relied upon as statements of fact. Your attention is drawn to the Important Notice on the last page.







Schools:

Modern one bedroom, furnished apartment in the prestigious Royal Wharf development adjacent to Pontoon Dock DLR and the River Thames.



Train:



Car:

M4, A40, M25, M40



Council Tax Band:

(Distances are straight line measurements from centre of postcode)



coopers
est 1986

0207 580 9658

**22 Cleveland Street, Fitzrovia,
London, W1T 4JB**

info@coopersonlondon.co.uk

CoopersResidential.co.uk

Energy Efficiency Rating		
	Current	Potential
Very energy efficient - lower running costs		
A++ (1-10)		
A+ (11-15)		
A (16-20)		
B (21-25)		
C (26-30)		
D (31-35)		
E (36-40)		
F (41-45)		
G (46-50)		
Not energy efficient - higher running costs		
England & Wales		

Important Notice: These particulars, whilst believed to be accurate are set out as a general outline only for guidance and do not constitute any part of an offer or contract. Intending purchasers should not rely on them as statements or representation of fact, but must satisfy themselves by inspection or otherwise has the authority to make or give any representation or warranty in respect of the property.